

BHAWANI ENCLAVE

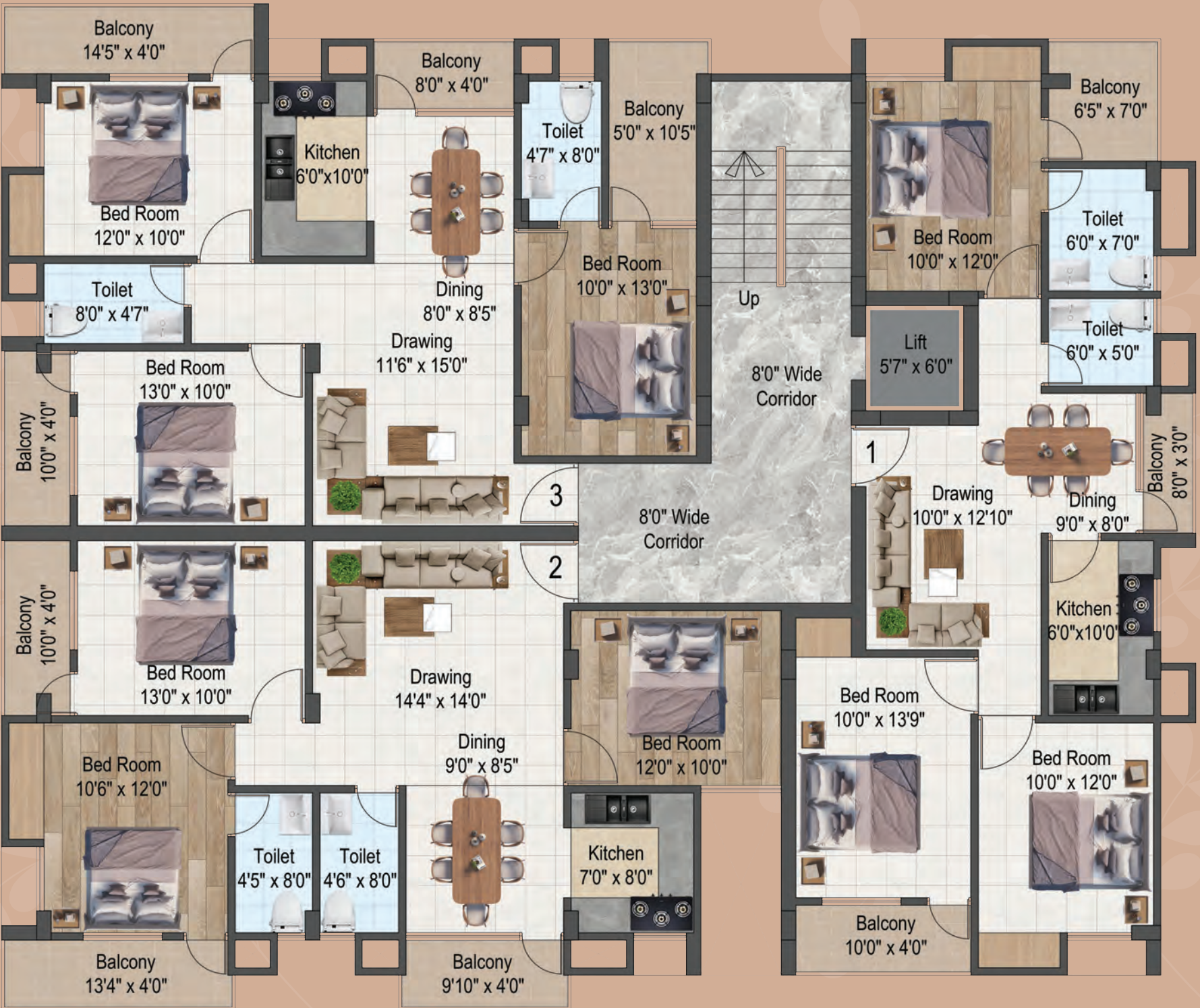
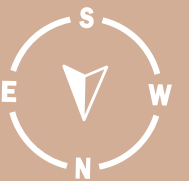


Get In Touch

+91 079797 21170

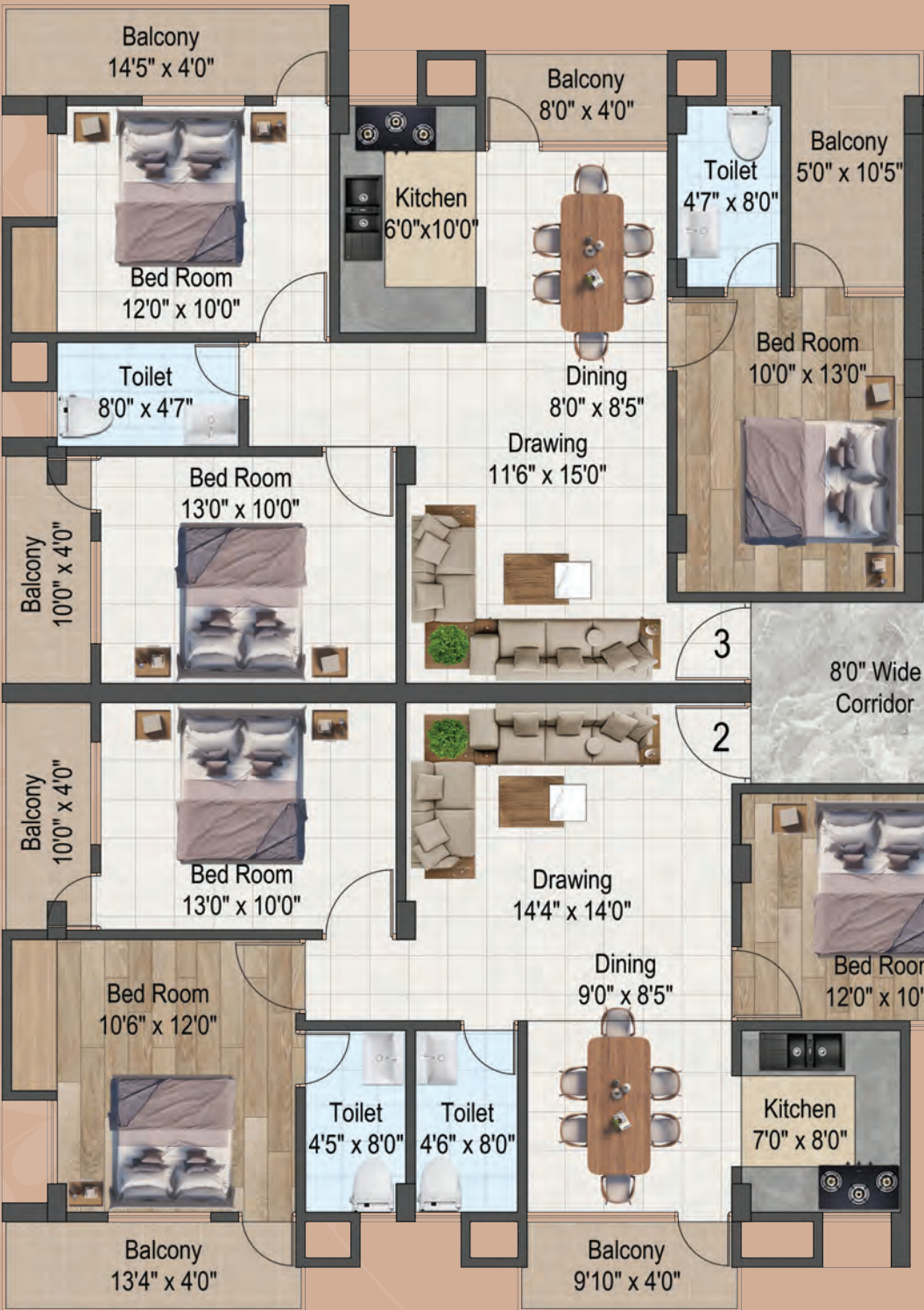
FLAT 1

TYPE-3 B.H.K | SBUA-1225 Sq.Ft.



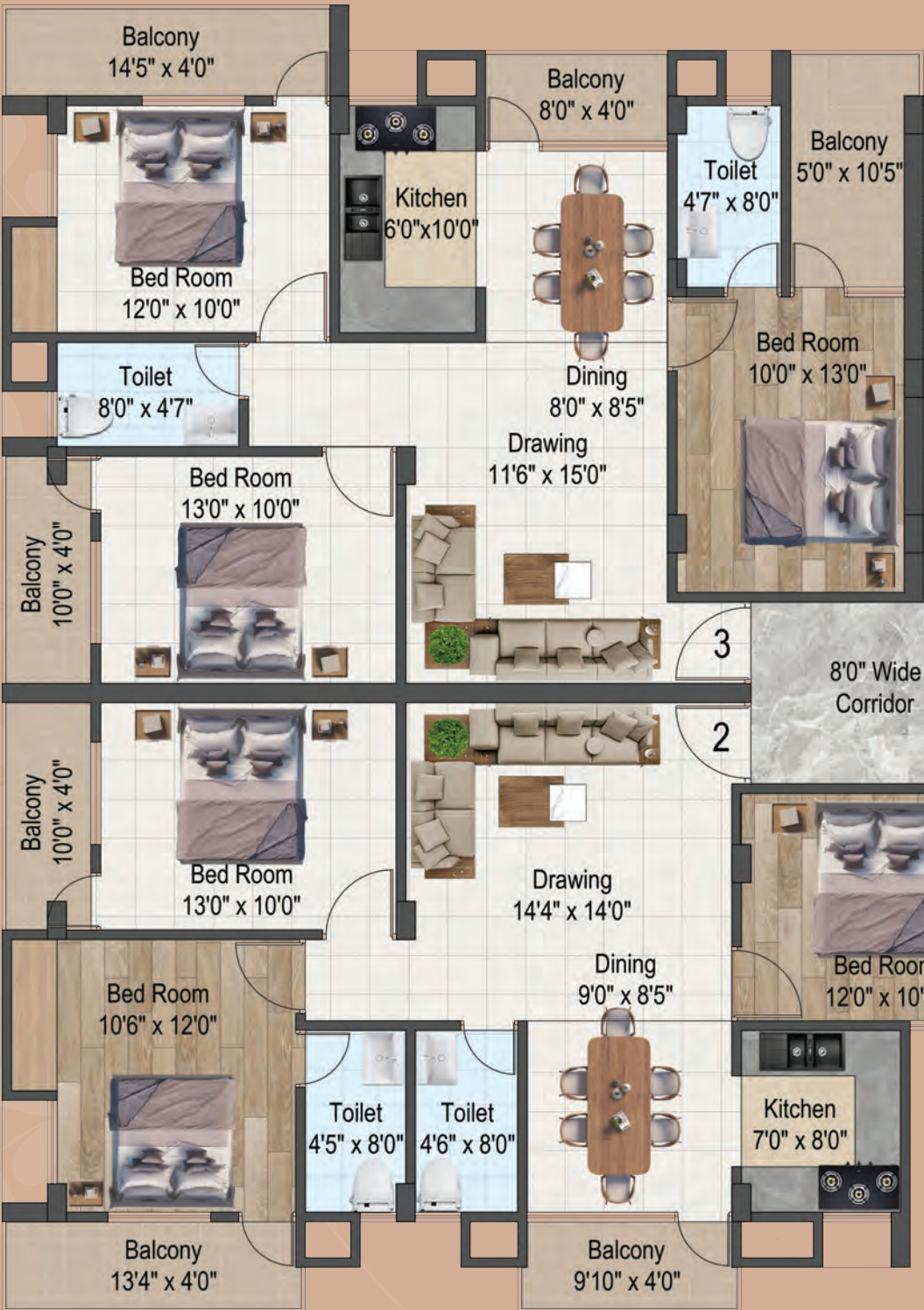
FLAT 3

TYPE-3 B.H.K | SBUA-1425 Sq.Ft.



FLAT 2

TYPE-3 B.H.K | SBUA-1345 Sq.Ft.



S P E C I F I C A T I O N S



STRUCTURE

Rcc Column & Pedestal With Anti- Termitetreatment In Foundation. Rcc Column/ Beams/ Slabs.



DOOR

Flush Door of Water Proof Commercial Ply.



WINDOW

3 track sliding UPVCwindows.



FLOORING

4X2 GVT Vitrified floor tiles in whole flat. (except toilet) of JOHNSON / KAJARIA.



BATHROOM

Flooring in floor ceramic tiles and dado in ceramic tiles upto roof height. Standard basin will be provided in both toilets.



KITCHEN

Granite working platform with ceramic tiles dado upto 24" height. With Handmade S.S Sink.



WALL

10" thick external and 5" thick internal partition brick work masonry. Wall putty on Internal & Texture on External wall.



SANITARY FITTINGS

All C.P. or brass fitting of standard make.White glazed vitreous sanitary ware. Wall hung commode with concealed cistern,diverter systems in all Bath rooms.



ELECTRICAL

Concealed conduit copper wiring standard fittings and fixtures ... of Anchor / Schneider with modular switches .



WATER SUPPLY

Through deep boorewell to overhead tank.

SALIENT FEATURES

RERA approved project

Project approved by R.M.C

Construction with high quality materials.

Excellent location with all schools and market at walking distance.

Well furnished parking facility.

Easy transportation facility to anywhere in city from the apartment.

Finance facility from banks.

Water harvesting system.

HIGHLIGHTS

Lift 1 no.

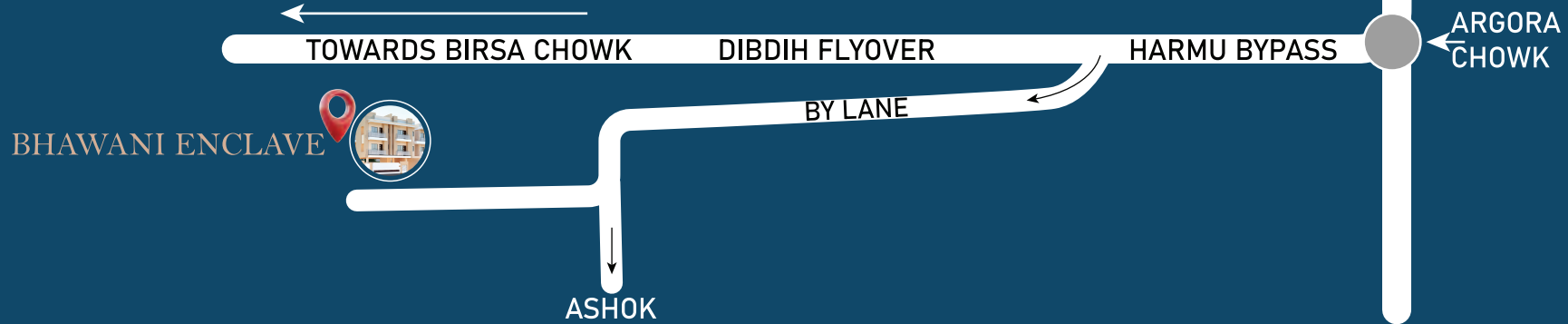
Branded materials & fittings

24X7 security guard.

CCTV

Well ventilated rooms.

LOCATION MAP



OUR PREVIOUS PROJECT



NISHESH ARPAN



BHARDWAJ ARPAN



RAJRAPA ARPAN



AMBIKA ENCLAVE



GOMTI LAXMI ENCLAVE



SHAILMANORAM ENCLAVE



ARPAN VILASH BLOCK B



ARPAN VILASH BLOCK A



PROMOTERS & DEVELOPERS
PRP INFRA PROJECT

OFF. ADDRESS : GE, AMBIKA ENCLAVE, SHIV BAGAN, MAIKEY ROAD,
UPPER BAZAAR, RANCHI, INDIA, JHARKHAND

Phone : +91 079797 21170

E-mail : prpinfraproject@gmail.com

DISCLAIMER

All details in this booklet are for easy information and concept purposes only, and do not form part of the agreement. This document is tentative and promoter reserves the right to make variations and modifications.

DESIGN BY : PHOENIX DESIGN (6202288195 / 9304366467)