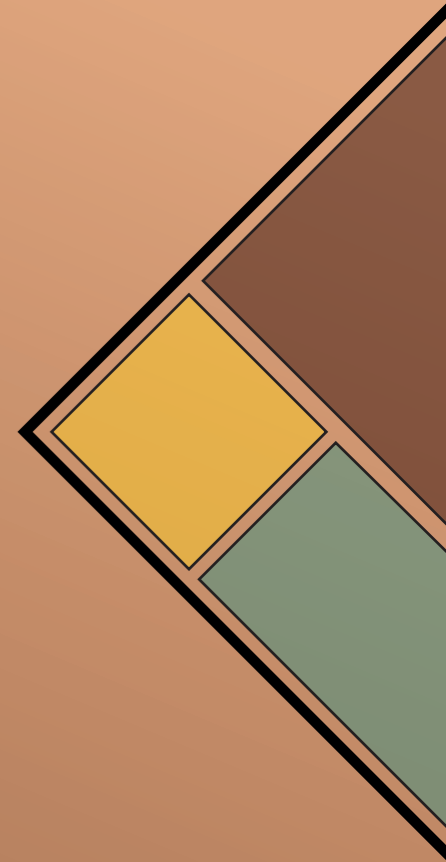




Presents

RAJRAPPA ARPAN



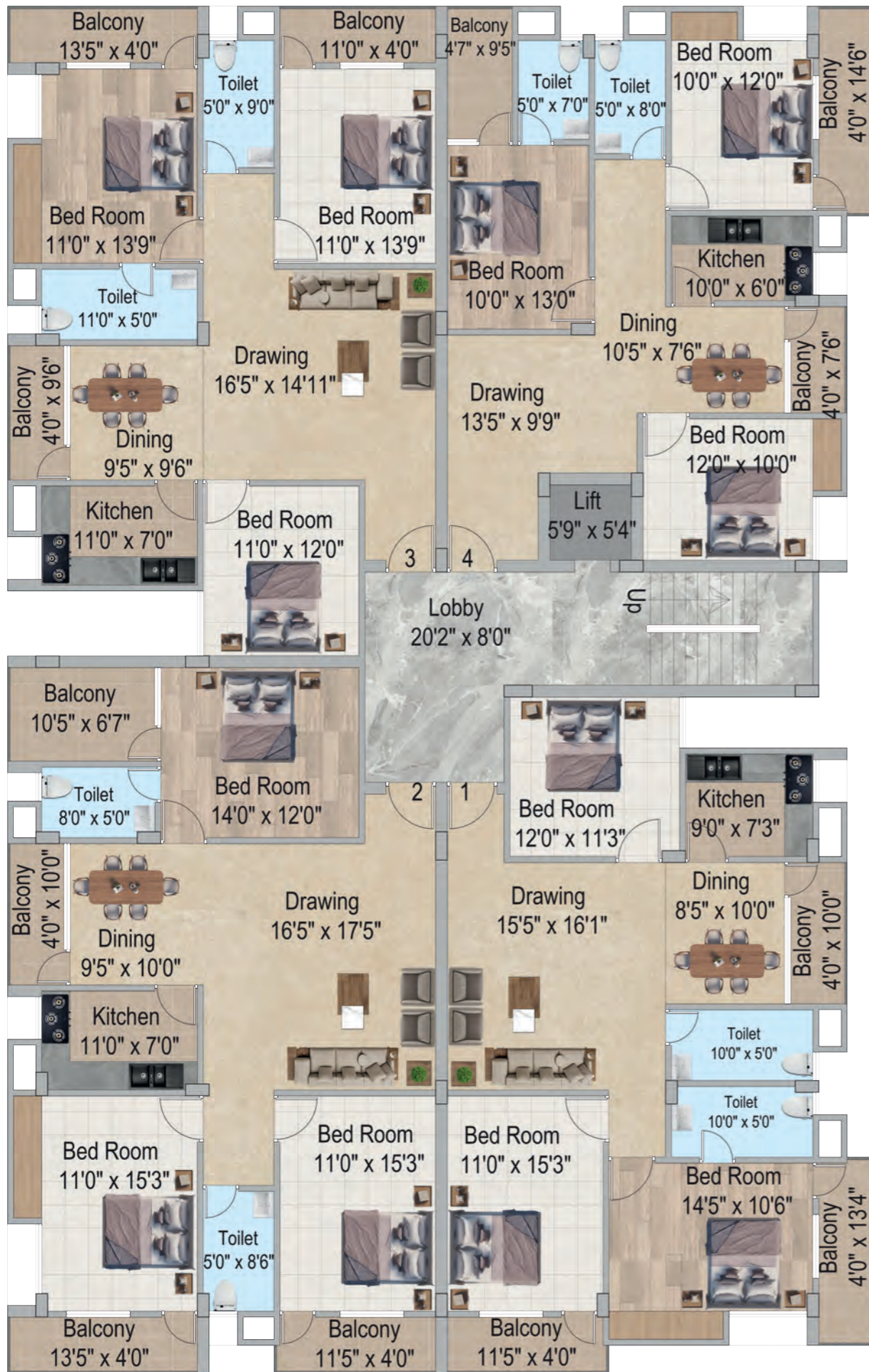


Presents

RAJRAPPA ARPAN

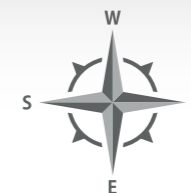


Typical Floor Plan

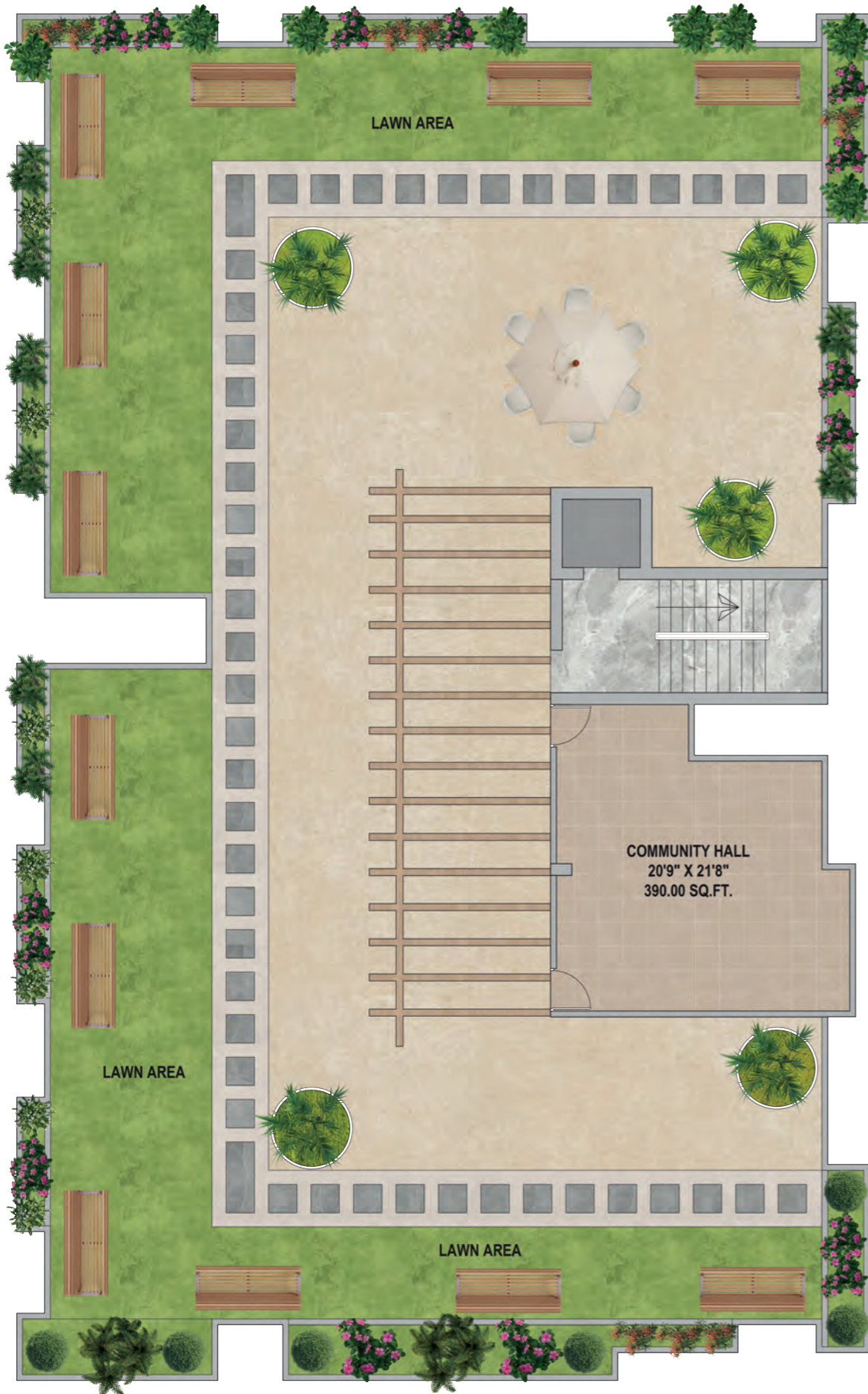


Area Details

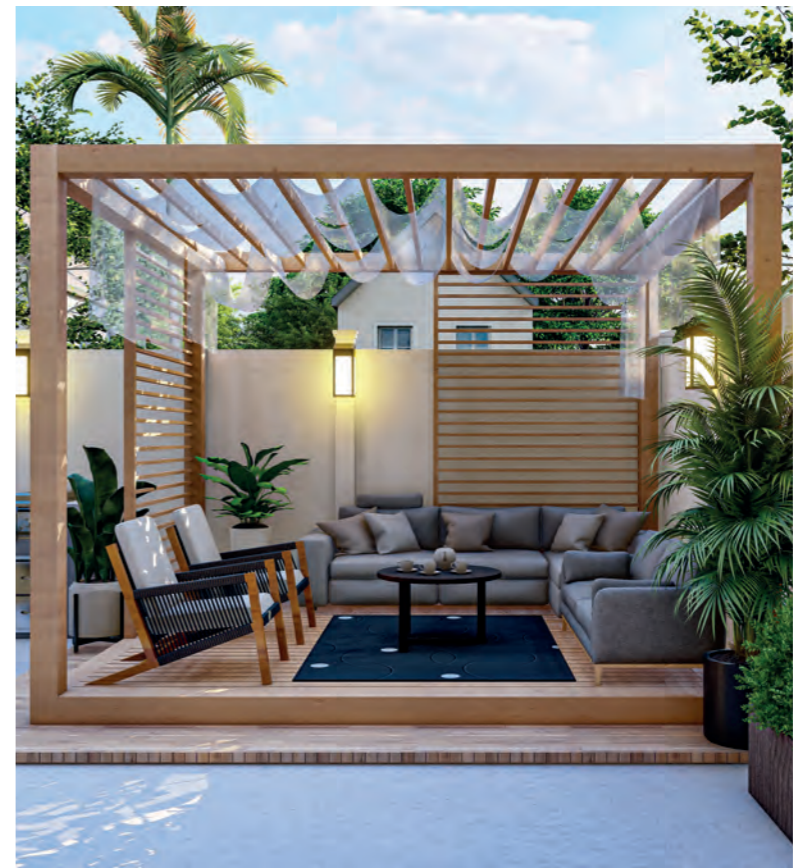
NO	FLAT	B/U AREA	SUPER B/U AREA
1	3 BHK	1255 SQ.FT.	1630 SQ.FT.
2	3 BHK	1450 SQ.FT.	1885 SQ.FT.
3	3 BHK	1280 SQ.FT.	1665 SQ.FT.
4	3 BHK	1075 SQ.FT.	1400 SQ.FT.













Terrace Floor Plan



Beautiful Terrace



SPECIFICATIONS

	STRUCTURE	Rcc Column & Pedestal With Anti- Termitetreatment In Foundation. Rcc Column/ Beams/ Slabs.
	DOOR	Flush Door of Water Proof Commercial Ply.
	WINDOW	3 track sliding UPVC windows.
	FLOORING	Vitrified floor tiles in whole flat. (except toilet) of JOHNSON. / Kajaria
	BATHROOM	Flooring in floor ceramic tiles and dado in ceramic tiles upto roof height. Standard basin will be provided in both toilets.
	KITCHEN	Granite working platform with ceramic tiles dado upto 24" height. With Handmade S.S Sink.
	WALL	10" thick external and 5" thick internal partition brick work masonry. Wall putty on Internal & Texture on External wall.
	SANITARY FITTINGS	All C.P. or brass fitting of standard make. White glazed vitreous sanitary ware. Wall hung commode with concealed cistern, diverter systems in all Bath rooms.
	ELECTRICAL	Concealed conduit copper wiring standard fittings and fixtures ... of Anchor with modular switches .
	WATER SUPPLY	Through deep boorewell to overhead tank.

SALIENT FEATURES

- RERA approved project
- Project approved by R.M.C
- Construction with high quality materials.
- Excellent location with all schools and market at walking distance.
- Well furnished parking facility.
- Easy transportation facility to anywhere in city from the apartment.
- Finance facility from banks.
- Water harvesting system.

HIGHLIGHTS

- Lift 1 no.
- Branded materials & fittings
- 24X7 security guard.
- CCTV
- Well ventilated rooms.





*Bhardwaj
Arpan
photo*



AMBIKA ENCLAVE



GOMTI LAXMI ENCLAVE



SHAILMANORAM ENCLAVE



ARPAN VILASH BLOCK B



BINDHYACHAL ENCLAVE



NISHESH ARPAN



ARPAN ENCLAVE PHASE 1 AND PHASE 2



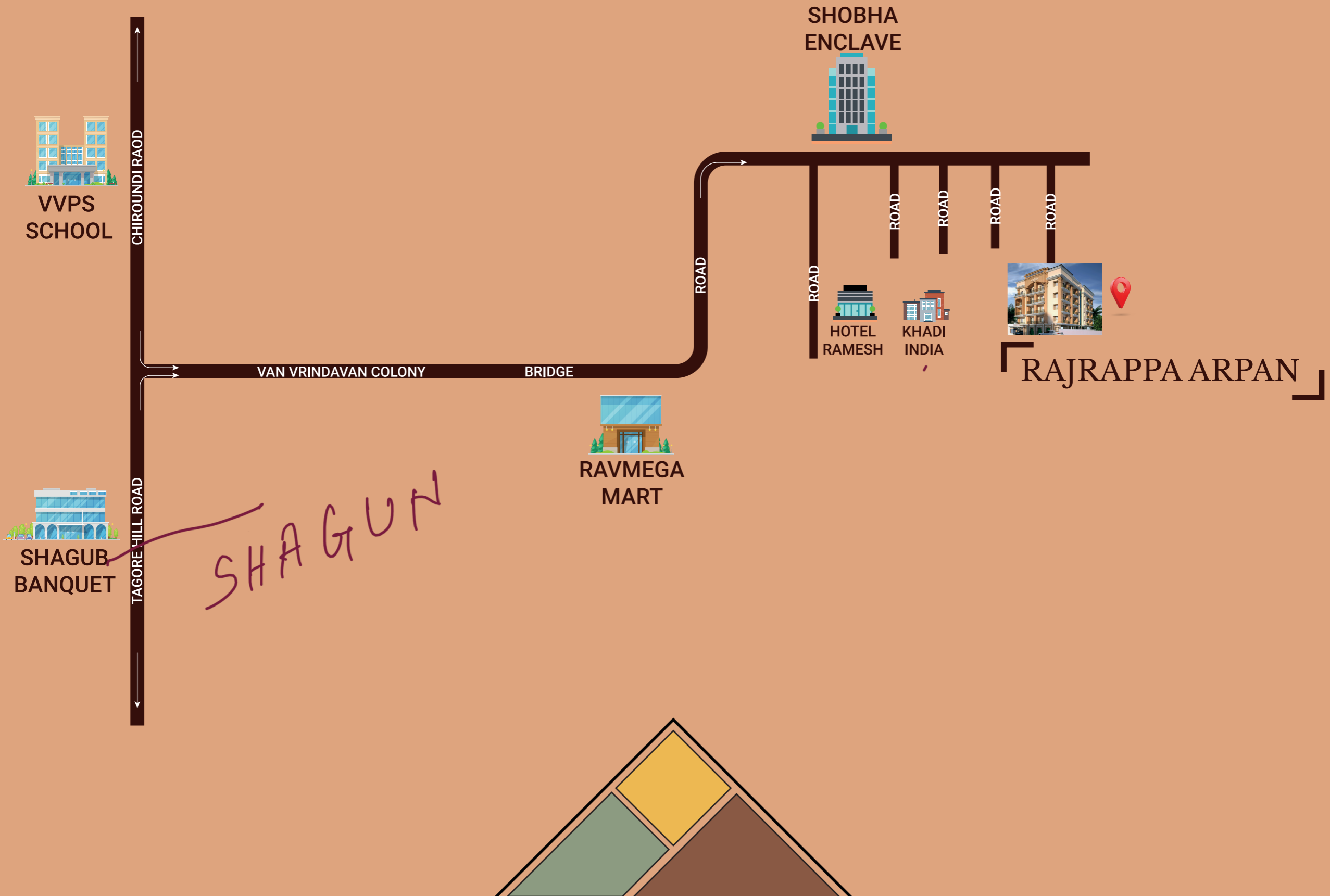
ARPAN VILASH BLOCK A



PALASH ARPAN



Location Map





**PROMOTERS & DEVELOPERS
PRP INFRA PROJECT**

**OFF. ADDRESS :GE, AMBIKA ENCLAVE, SHIV BAGAN, MAIKEY ROAD,
UPPER BAZAAR, RANCHI, INDIA, JHARKHAND**

Phone : +91 079797 21170

E-mail : prpinfraproject@gmail.com

Website : www.arpanmegastructures.com

DISCLAIMER

All details in this booklet are for easy information and concept purposes only , and do not form part of the agreement. This document is tentative and promoter reserves the right to make variations and modifications.

DESIGN BY : PHOENIX DESIGN (6202288195 / 9304366467)